

## StoneREX Premium Granit

### Façade board, socle board

**StoneREX Premium Granit** - fiber cement board covered with natural stone chips.

StoneREX Premium Granit cement fiber boards are mainly used as façade boards in ventilated facade constructions. Boards can also be used for different construction elements - agricultural projects, balconies etc. Covering the facades of buildings with StoneREX Premium Granit cement fiber facade boards reduces costs on energy, enhances ventilation of the facades and makes the building moisture and mold resistant. Boards do not contain harmful substances for human health and environment and they help to create healthy internal environment in the buildings. Boards are strong and resistant against wear and mechanical impact, they are frost and moisture resistant and preserve their good appearance for years.



**Harmonized technical specification: EN 12467:2012+A2:2018 Fiber Cement flat sheets. Product specification and test methods.**

#### Measurements

Thickness	mm	10.0
Width	mm	1192
Length	mm	3050
	mm	2500
	mm	545

#### Dimensional tolerance

Thickness	mm (max)	0,05
Width	mm (max)	+/- 0.3%
Length	mm (max)	+/- 5.0

Bulk density	kg/m3	1650
Average weight (with 5% humidity)	kg/m2	17.2
	N/mm2	15 000

## StoneREX Premium Granit

### Bending tensile strength

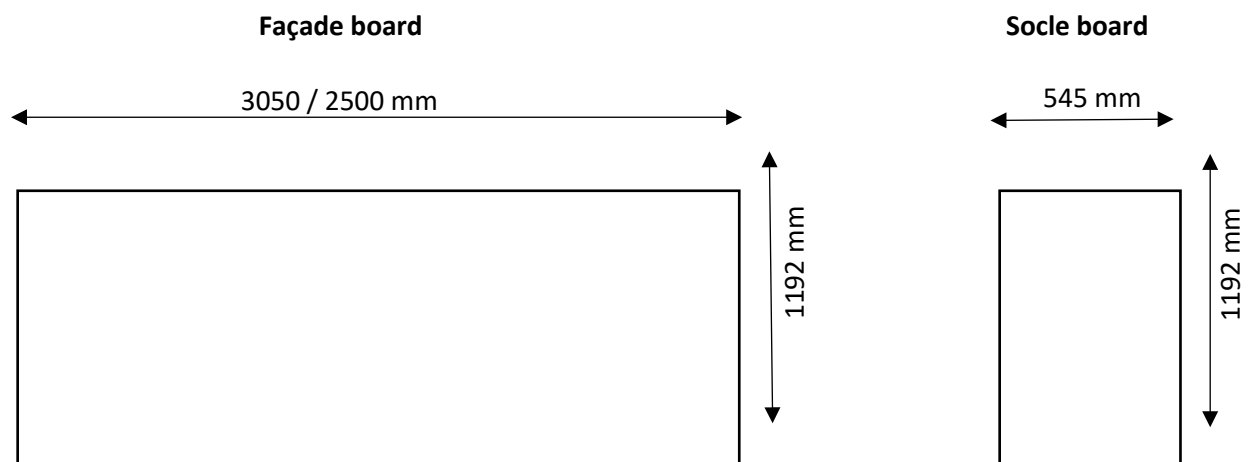
#### Flexural strenght

Dry condit. along the grain	MPa	30.00
Dry condit. across the grain	MPa	24.00
Humid condit. along the grain	MPa	18.00
Humid condit. across the grain	MPa	15.00

#### Resistance to impact

Dry condit. along the grain	kJ/m <sup>2</sup>	2.7
Dry condit. across the grain	kJ/m <sup>2</sup>	2.0

Thermal expansion coefficient	mm/m °C	0.01
Thermal conductivity	Wt/mK	0.6
Usage temperature	°C	min -40 max. 80
Cold weather performance	cycles	150
Water absorption	%	10
Thickness swelling in moist environment	mm/m	3
Water vapour permeability	ng/m <sup>2</sup> s	200
Reaction to fire	EN 13501	A2-s1, d0
Category	EN 12467	NT A31



**StoneREX Premium Granit**



**Yellow**



**Vanilie**



**White**



**Walnut**



**Red Granit 1**



**Red Granit 3**



**Light Green**



**Beige**



**Gray Granit 1**



**Gray Granit 2**



**Gray Granit 3**



**Water Gray**



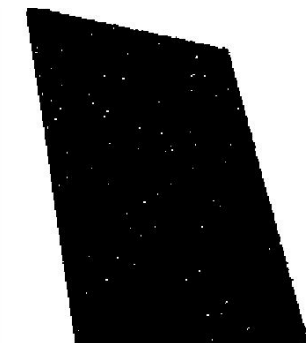
**Rosso**



**Alpi Green**



**Black**



**Shiny Black**

Issued: 20.03.2020.